

The instrument stanchions are available in a wide range of mounting options and capacity and can be customized to your requirement. They are made from 2" GI pipes and can be mounted to the ground or the wall to ensure that all your needs are met. The stanchions are custom manufactured based on the client requirement. The base plate provides for quick and easy installation. This reduces the time and effort to fabricate these on site which boosts your productivity for instrument erection.

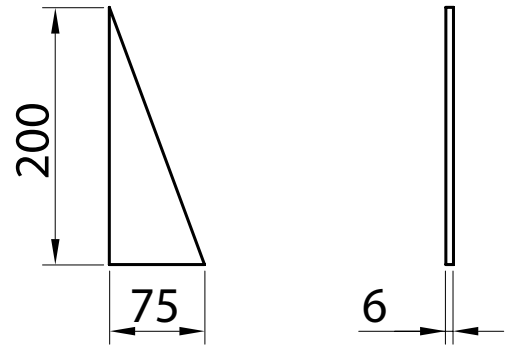
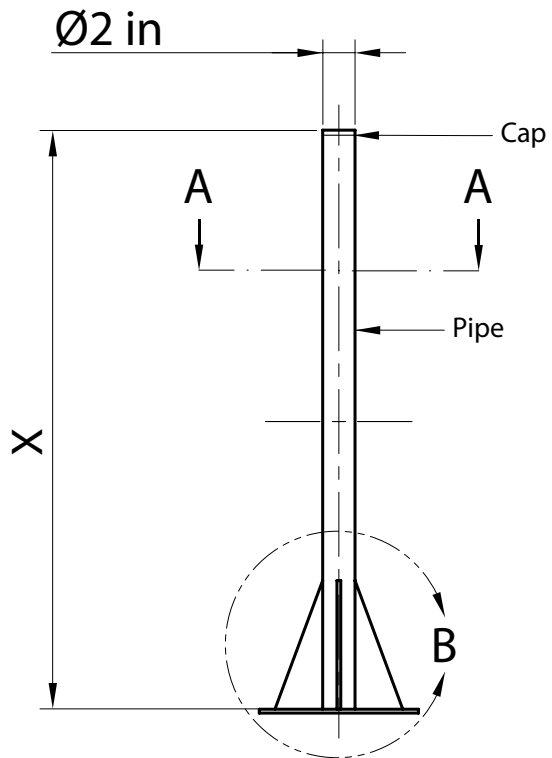


The stanchions are based on industry standards and can be customized to match your requirement of length, material, mounting capacity.

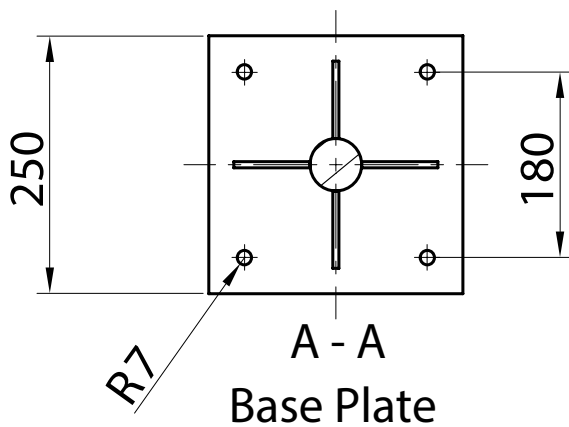
Product Code	Mounting	Number of Instruments	Material
INSP.X.SI.GR	Ground	1	2" MS Pipe
INSP.X.DB.GR	Ground	2	2" MS Pipe
INSP.X.SI.WA	Wall	1	2" MS Pipe
INSP.X.DB.WA	Wall	2	2" MS Pipe



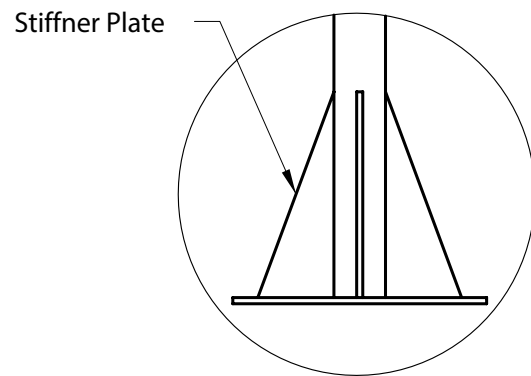
INSP.X.SI.GR



Stiffner Plate



A - A
Base Plate



Detail - B

Notes:-

1. All dimensions are in millimeters
2. The dimension shall be determined based on the type of instrument and requirement

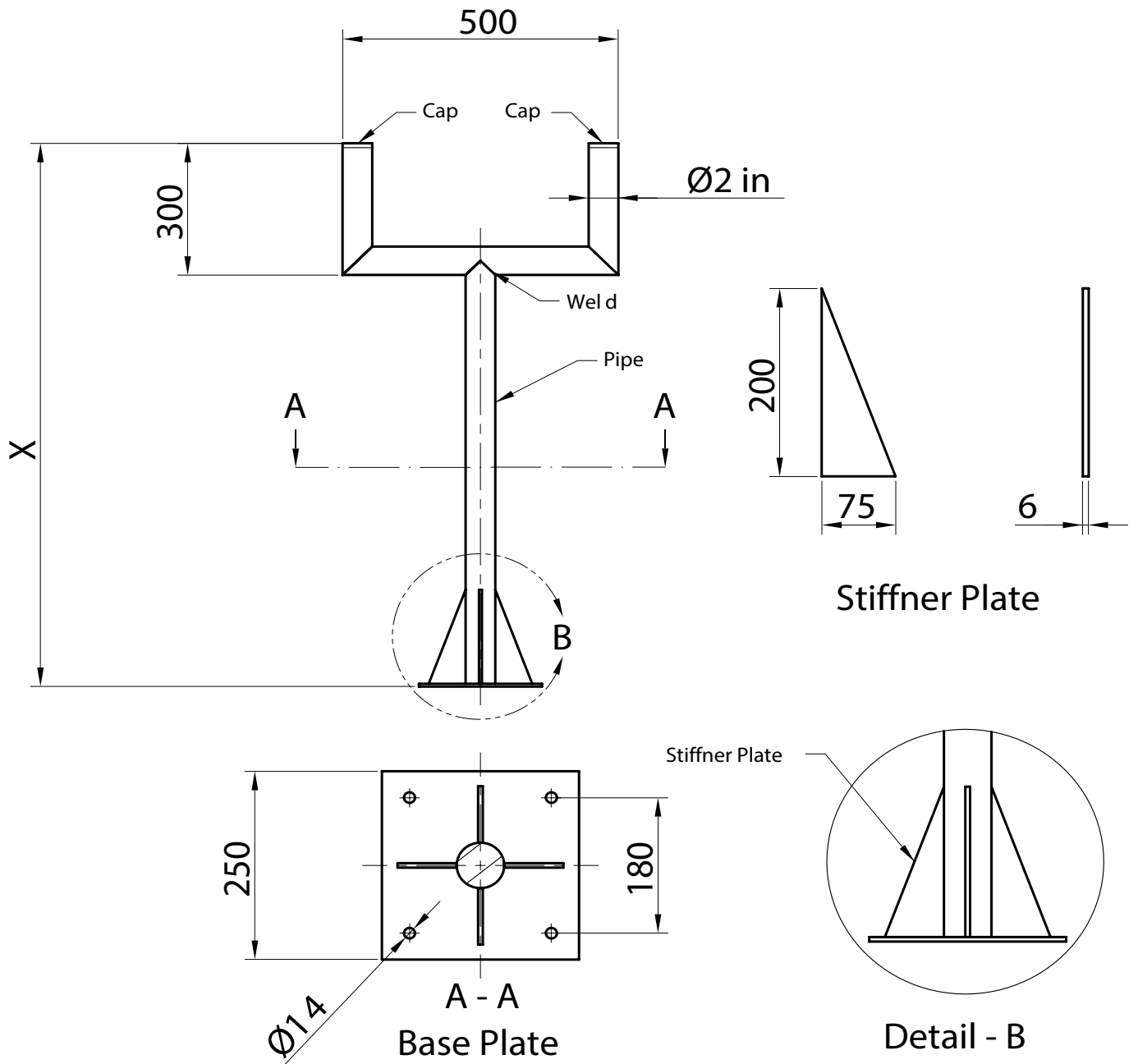


Aegion Dynamic

 www.aegiondynamic.com

 ads@aegiondynamic.com

INSP.X.DB.GR



Notes:-

1. All dimensions are in millimeters
2. The dimension shall be determined based on the type of instrument and requirement

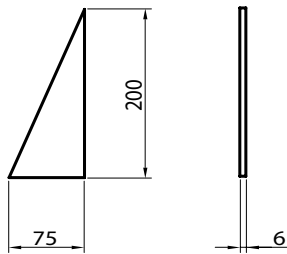
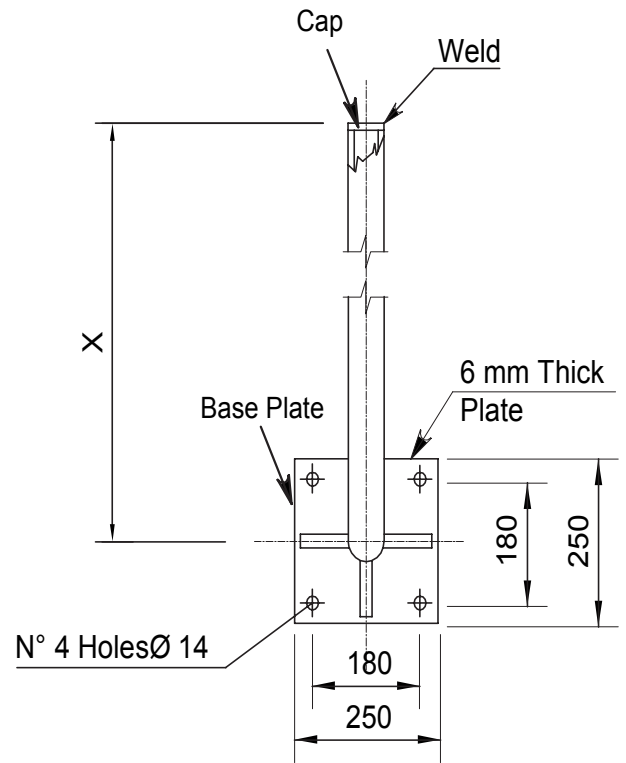
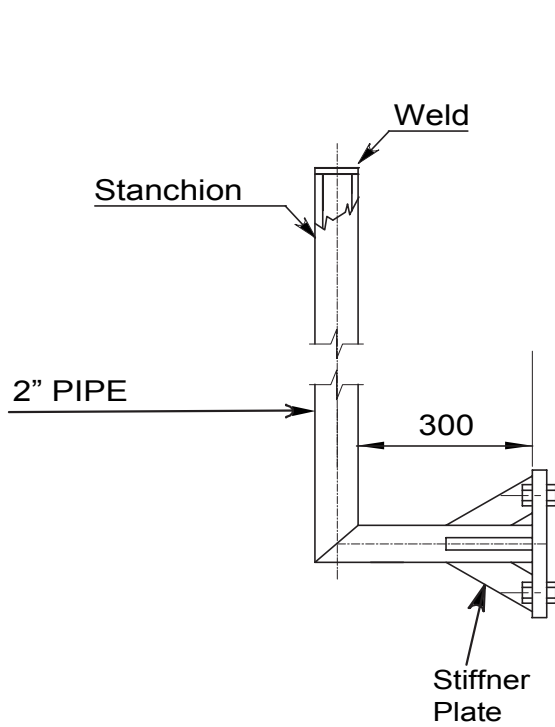


Aegion Dynamic

www.aegiondynamic.com

ads@aegiondynamic.com

INSP.A.SI.WA



Detail 'P'
Stiffner Plate

Notes:-

1. All dimensions are in millimeters
2. The dimension shall be determined based on the type of instrument and requirement

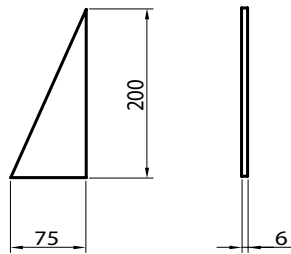
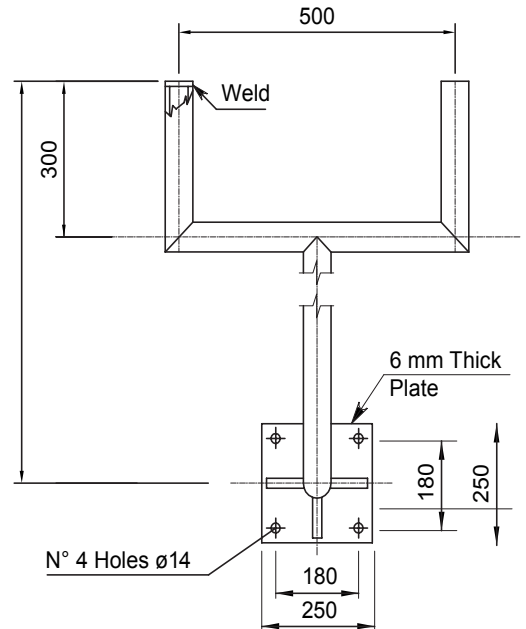
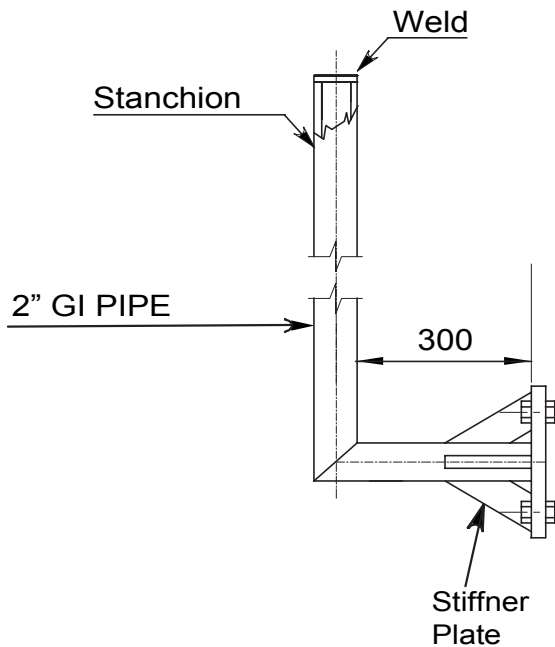


Aegion Dynamic

 www.aegiondynamic.com

 ads@aegiondynamic.com

INSP.A.DB.WA



Detail 'P'
Stiffner Plate

Notes:-

1. All dimensions are in millimeters
2. The dimension shall be determined based on the type of instrument and requirement

